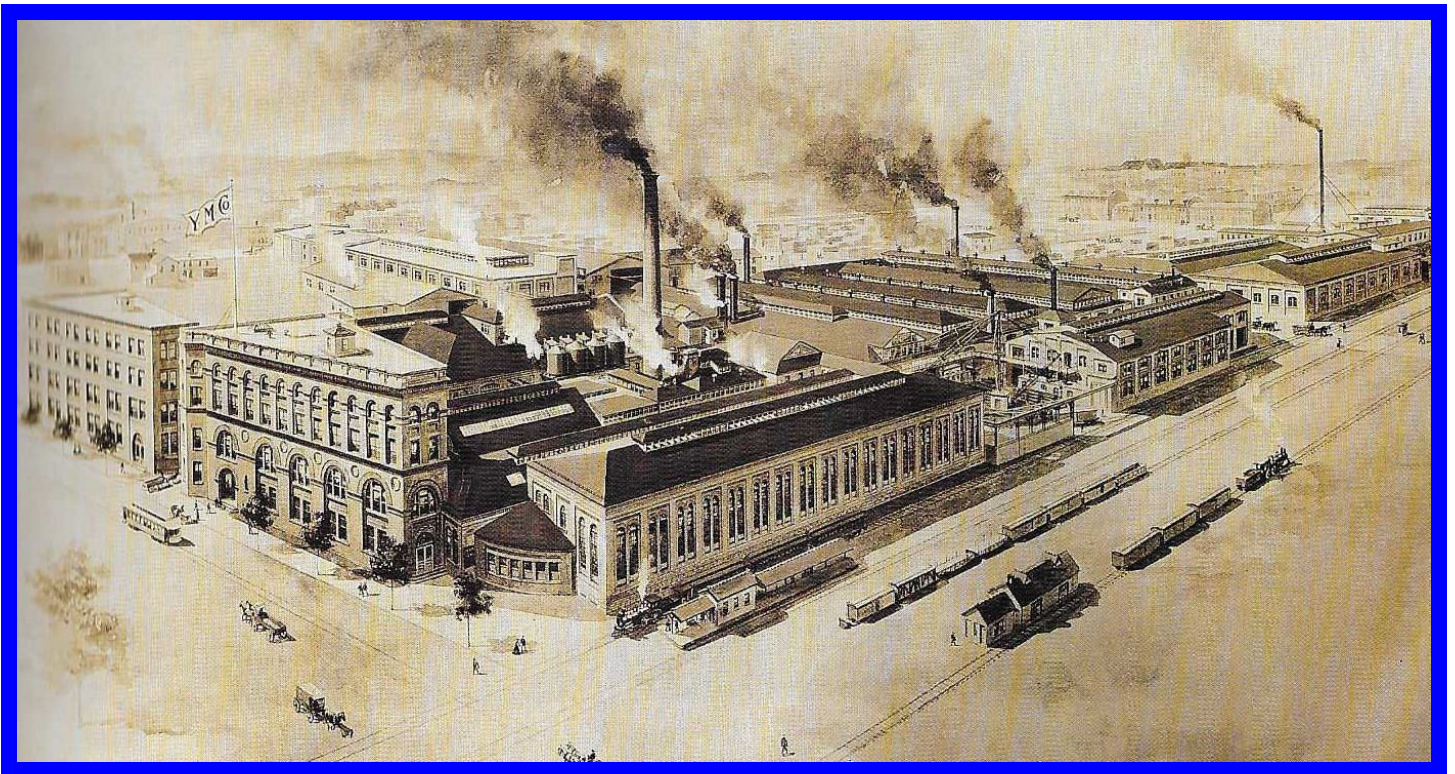


Refrigeration in American Breweries 1860-1920

York Refrigeration Machinery



YORK MANUFACTURING COMPANY
York PA, 1907 Bulletins

ASTOR, LENOX AND
TILDEN FOUNDATIONS.
1912
YORK MANUFACTURING CO.

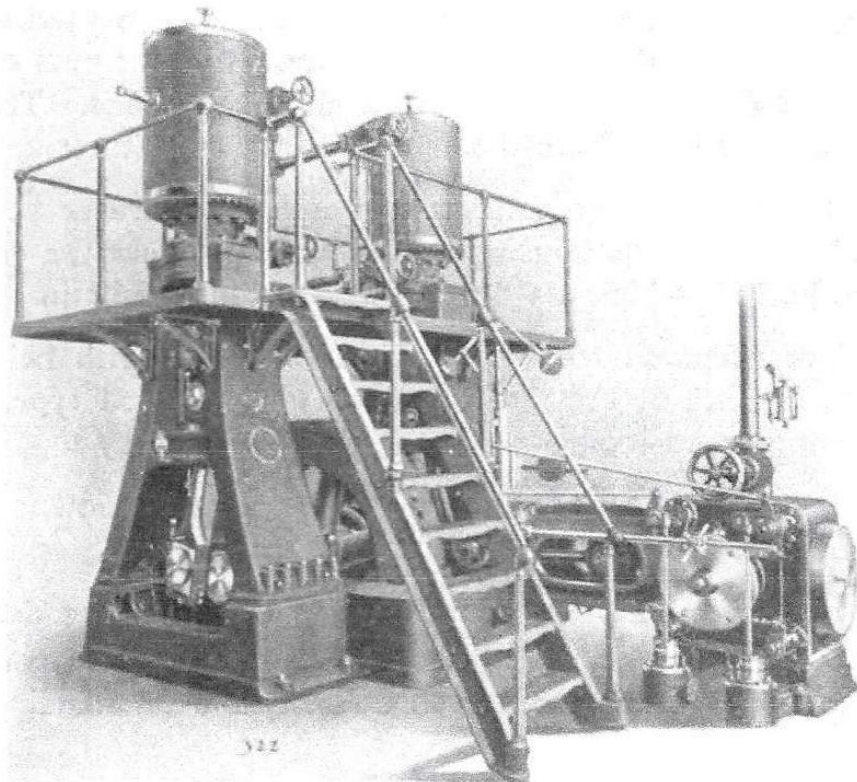
YORK, PENNSYLVANIA, U. S. A.

Bulletin No. 10

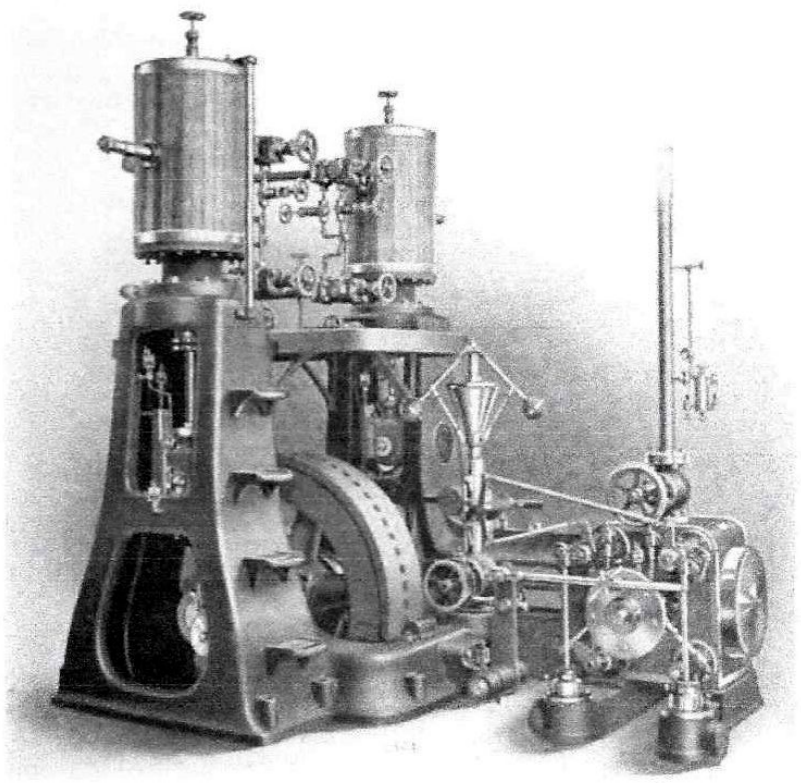
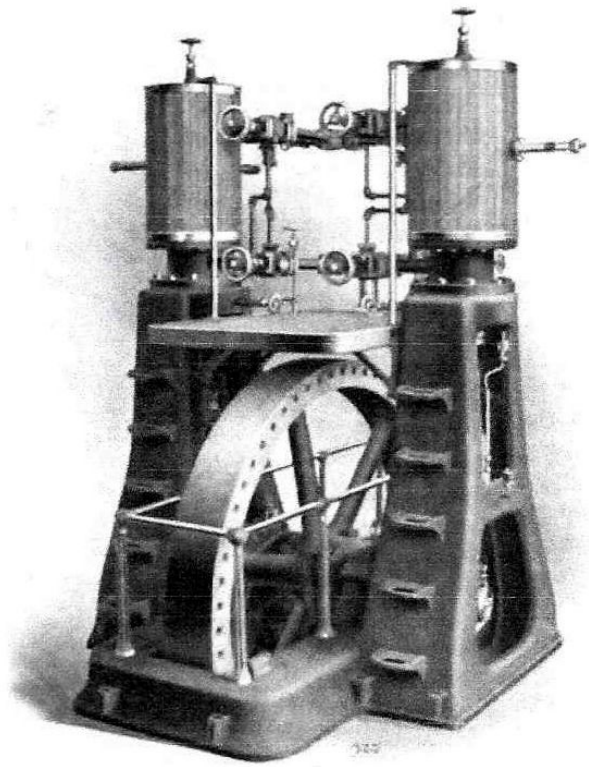
THE NEW YORK
PUBLIC LIBRARY
777005
ASTOR, LENOX AND
TILDEN FOUNDATION
R 1918 L

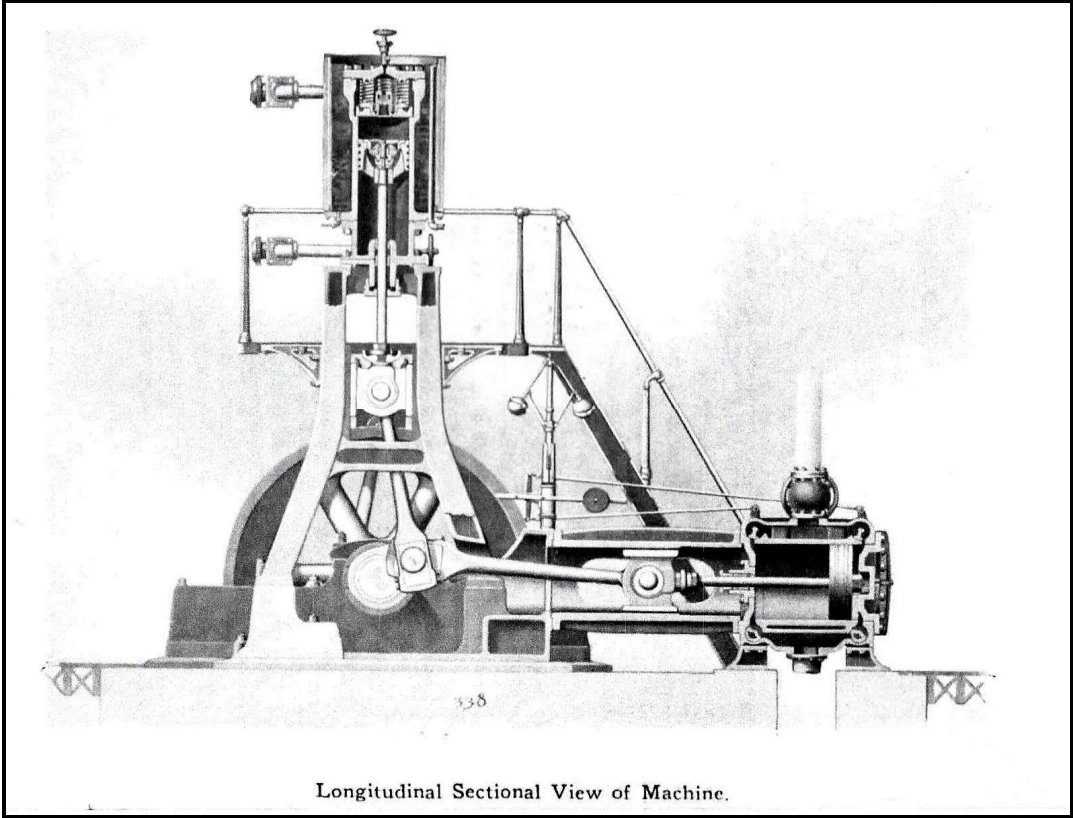
October, 1907

Vertical Single-Acting Ice Making and Refrigerating Machine

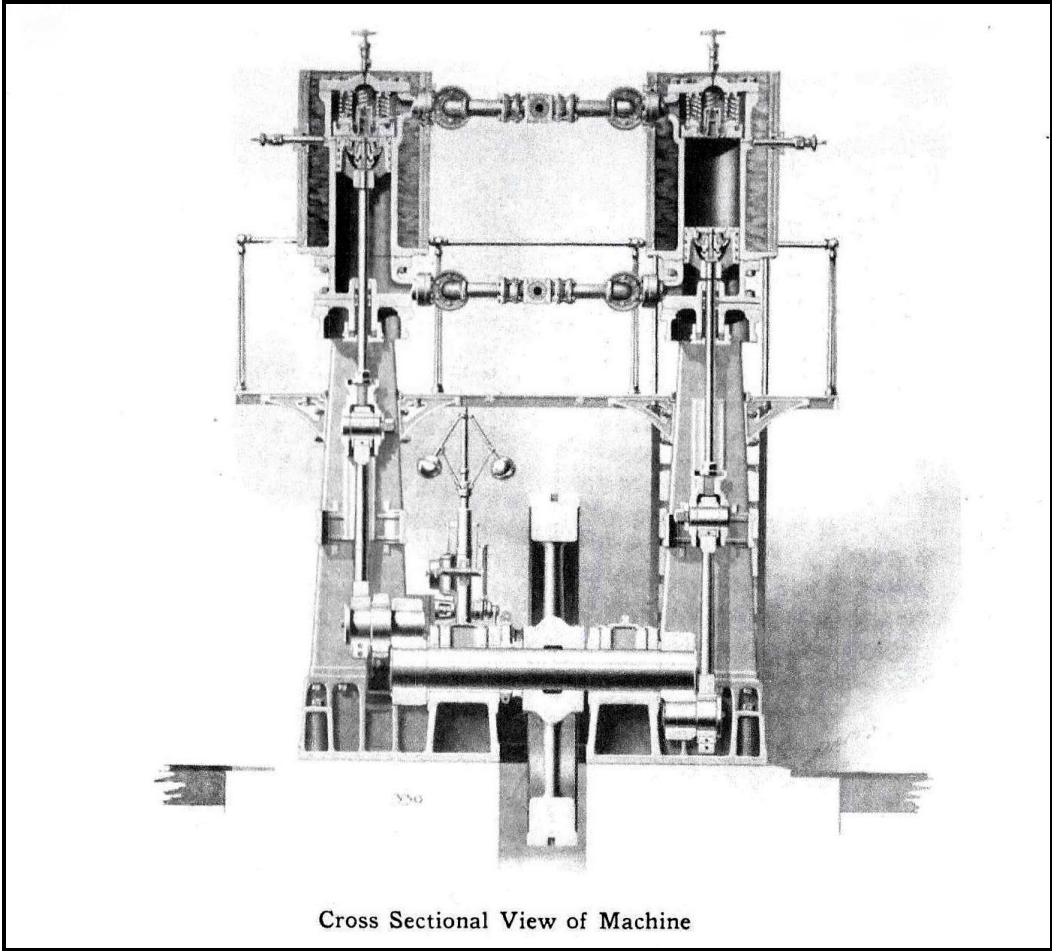


The vertical single-acting, false or safety head type of ammonia compressor is recognized by engineers who have made this line of machinery a specialty, to be the most efficient, prac-

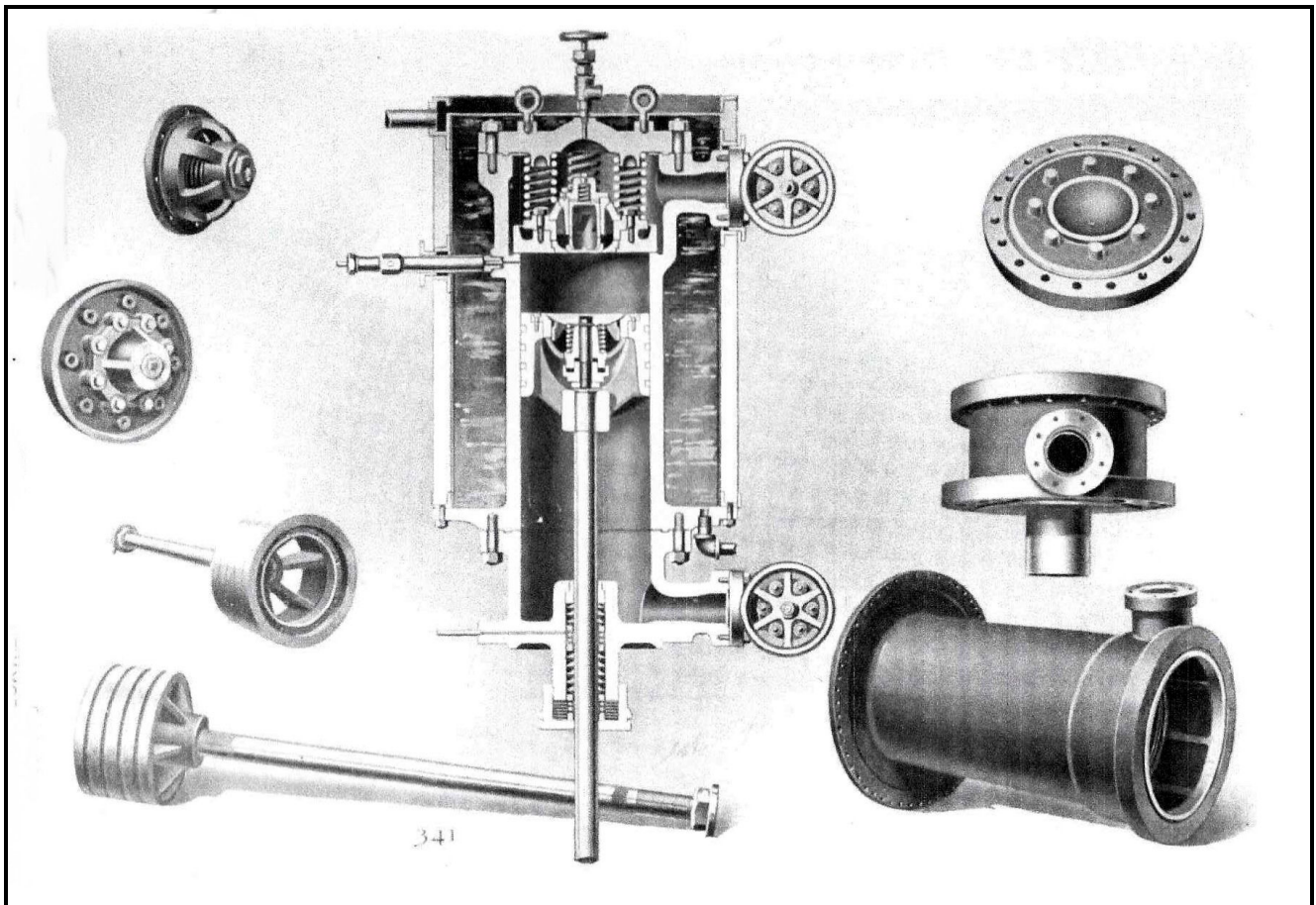
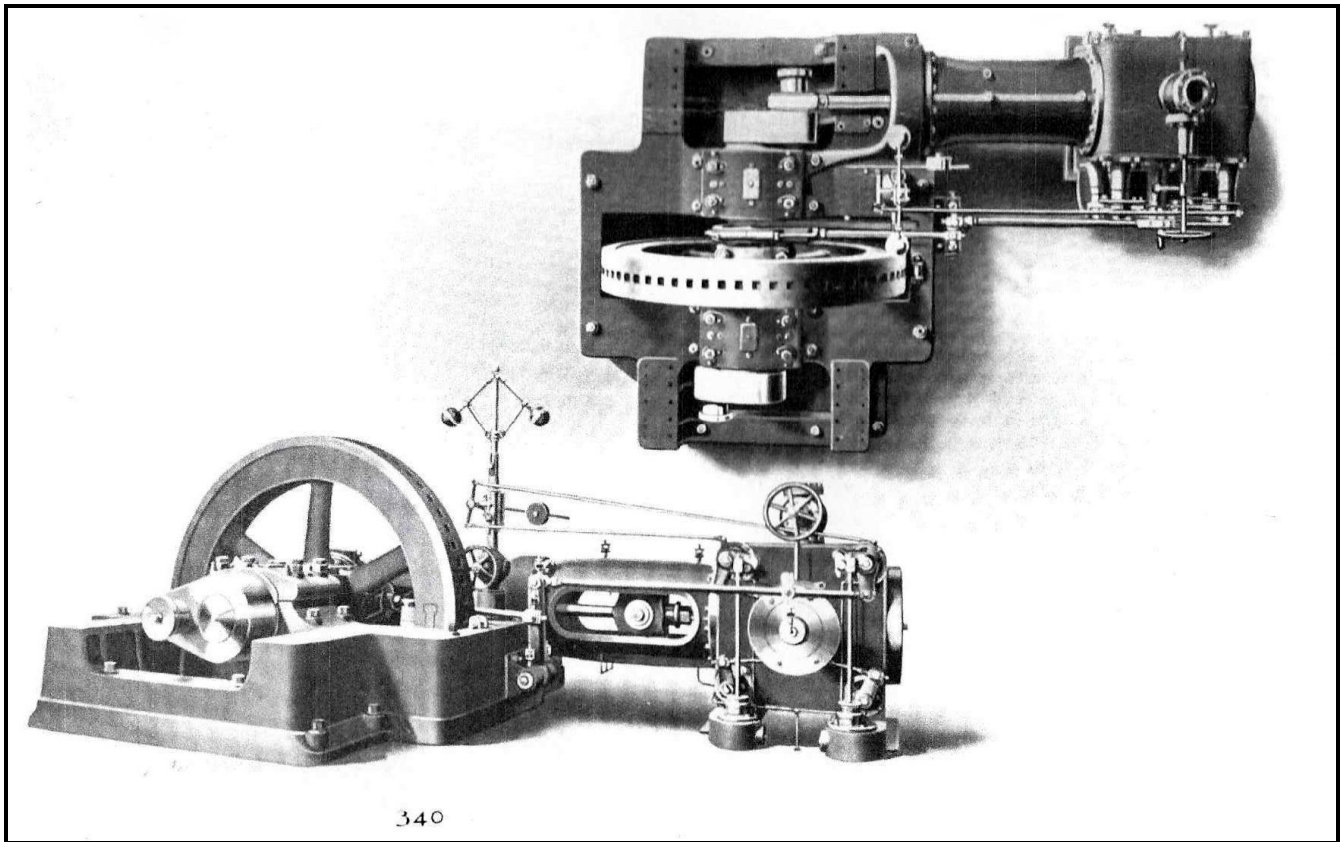




Longitudinal Sectional View of Machine.

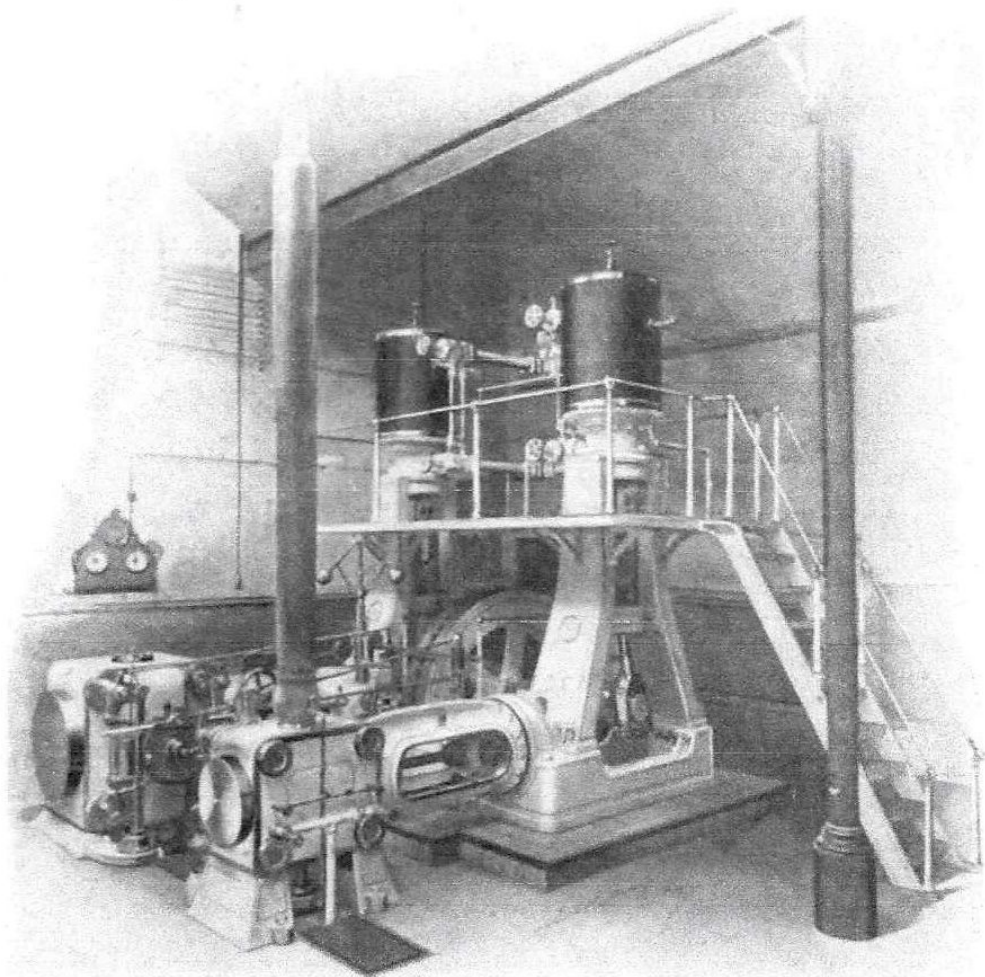


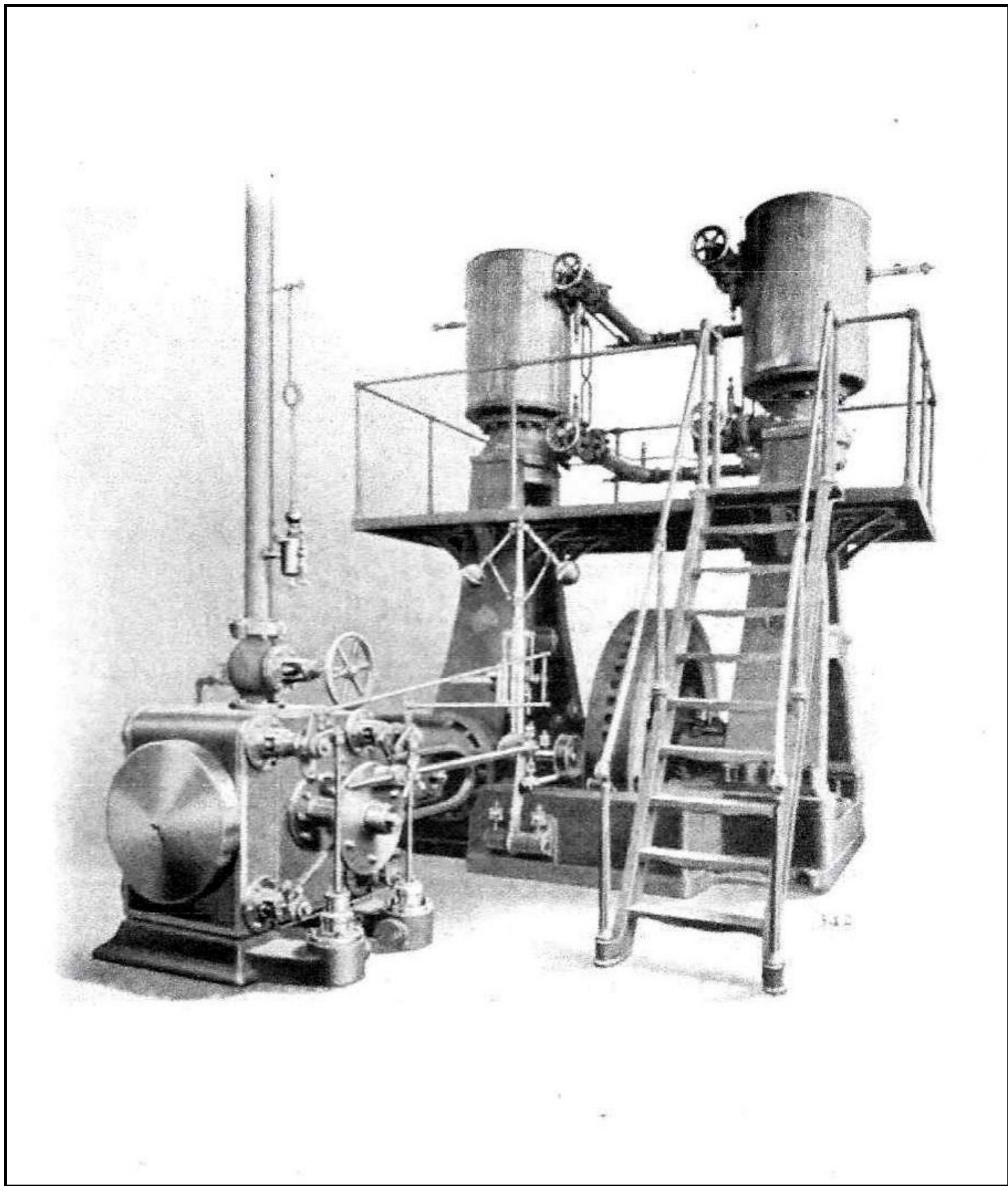
Cross Sectional View of Machine



We manufacture solely ice-making and refrigerating machinery and supplies, our factory giving employment to over twelve hundred men.

We have built during the past eleven years over 1,180 machines aggregating over 71,077 tons daily refrigerating capacity, this capacity being based on 15.67 pounds back pressure. If figured on 28 pounds back pressure, which is the basis on which some builders rate their machines, the total refrigerating capacity would be over 99,580 tons. This far exceeds the output of any other manufacturer of this class of machinery in the same length of time.





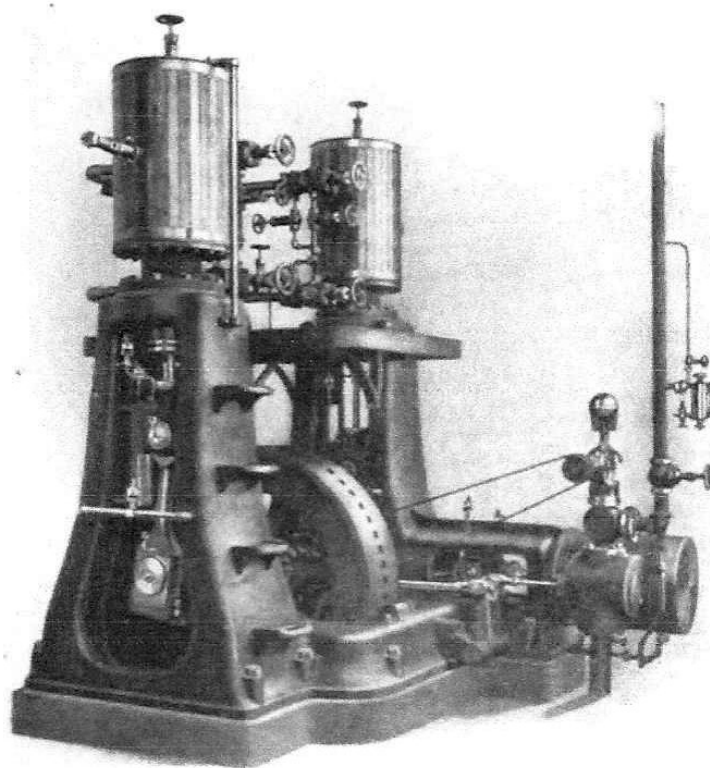
YORK MANUFACTURING CO.

YORK, PENNSYLVANIA, U. S. A.

Bulletin No. 11

July, 1907

Vertical Single-acting Ice Making and Refrigerating Machine



10-ton Refrigerating Machine

Compressors— $7\frac{1}{2}$ " bore, 10" stroke.

Steam Cylinder— $11\frac{1}{2}$ " bore, 10" stroke.

This cut is from a photograph of our standard ten-ton single-acting refrigerating machine. It is fitted with vertical single-acting false, or safety-head compressors and balanced piston valve engine. If desired, we can supply this machine with an engine fitted with Corliss valve gear, or belted as illustrated on next page. The details of the machine shown in this cut are described fully in Bulletin No. 10. The machine is furnished complete in every detail and guaranteed first-class in every respect.

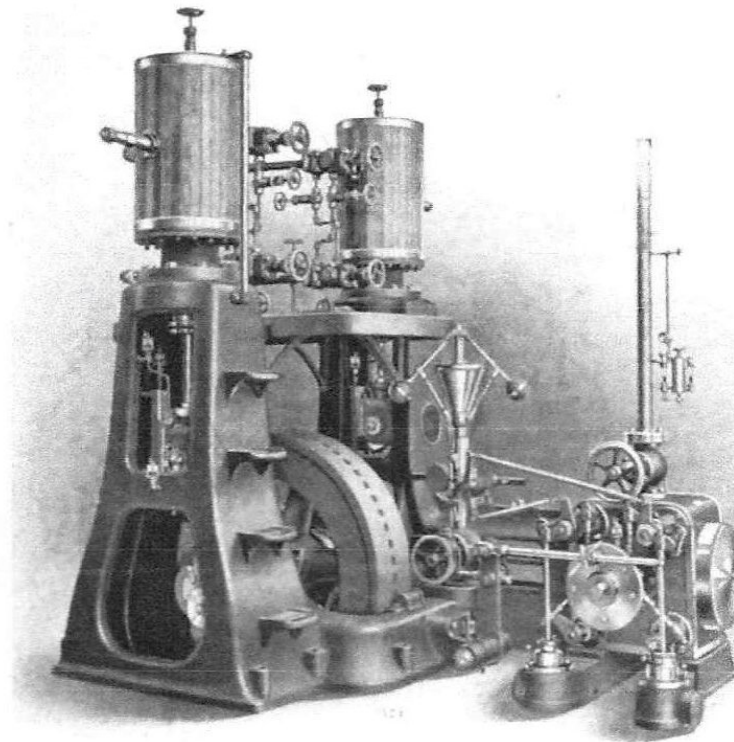
YORK MANUFACTURING CO.

YORK, PENNSYLVANIA, U. S. A.

Bulletin No. 13

July, 1907

Vertical Single-Acting Ice Making and Refrigerating Machine



30-ton Refrigerating Machine.

Compressors— $11\frac{1}{2}$ " bore, 15" stroke.

Steam Cylinder—16" bore, 15" stroke.

The above cut shows our standard thirty-ton single-acting refrigerating machine. It is fitted with vertical single-acting, false, or safety head compressors and Corliss valve engine. If desired, we can supply this machine with an engine fitted with balanced piston valve, or belted as illustrated on next page. If conditions warrant we are in a position to supply this machine fitted with tandem compound steam cylinders. See Bulletin No. 10 for full description of the details of machine shown in above cut. The machine is furnished complete in every detail and guaranteed first-class in every respect.

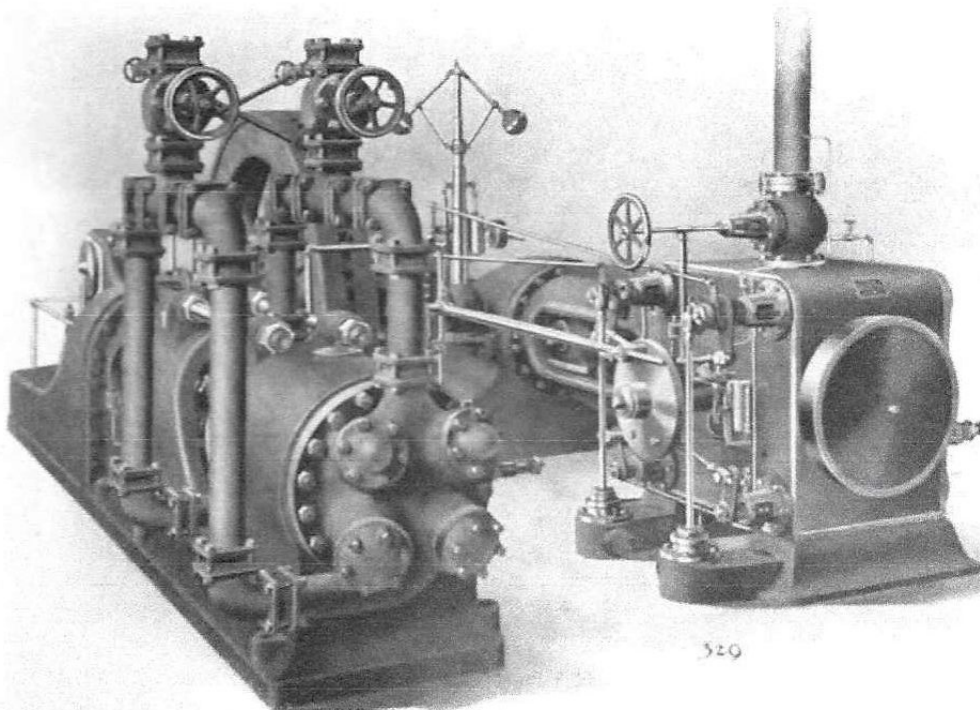
YORK MANUFACTURING CO.

YORK, PENNSYLVANIA, U. S. A.

Bulletin No. 15

October, 1907

Horizontal Double-acting Refrigerating and Ice Making Machine



The above illustration shows the general design of the York horizontal double-acting refrigerating and ice-making machine.

We are prepared to furnish these machines with belt drive, or with engines of the tandem or cross compound type, either condensing or non-condensing.

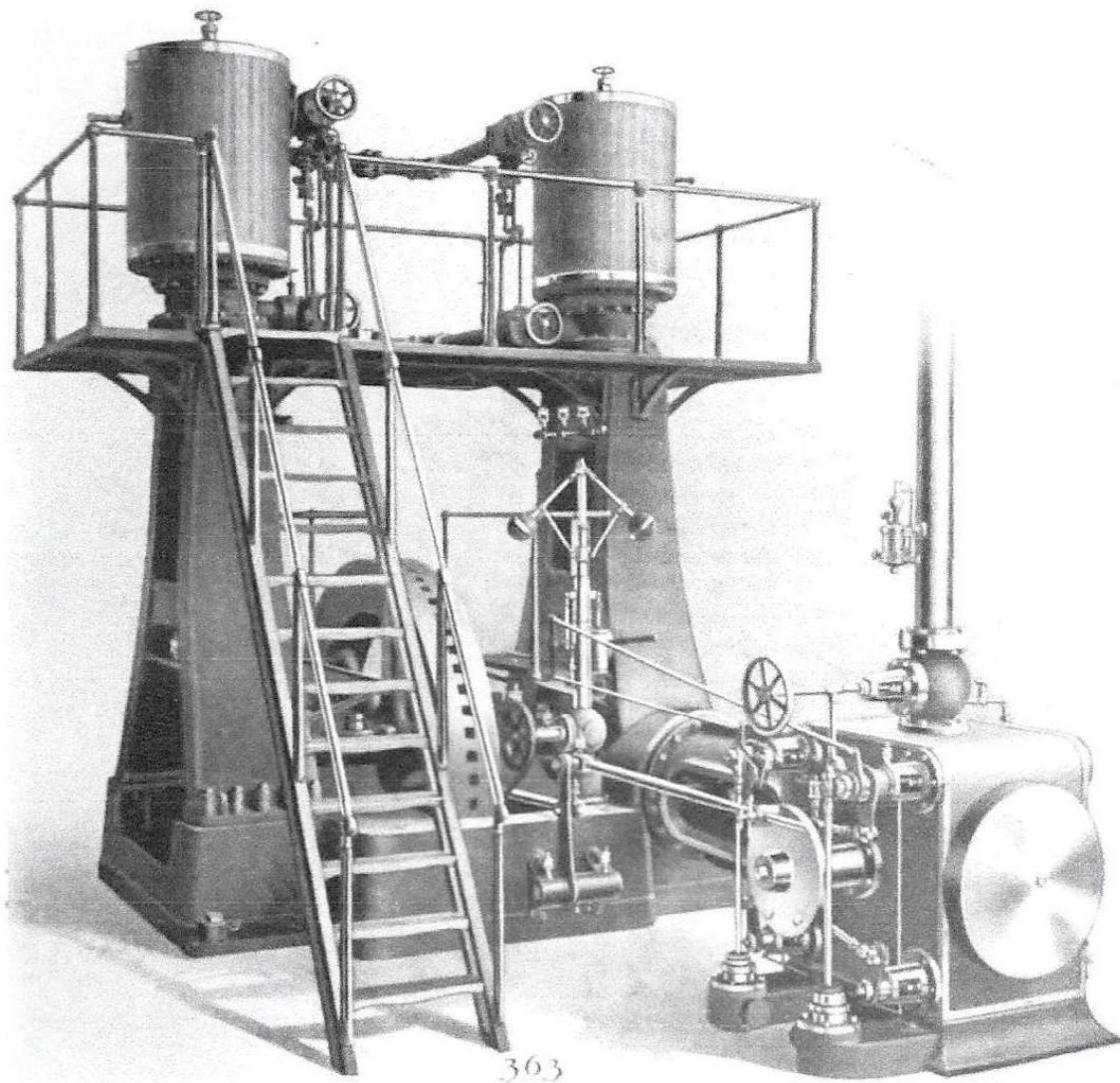
YORK MANUFACTURING CO.

YORK, PENNSYLVANIA, U. S. A.

Bulletin No. 19

September, 1907

Vertical Single-acting Ice Making and Refrigerating Machine



125-ton Refrigerating Machine.

Compressors—18" bore, 28" stroke.

Steam Cylinder—26" bore, 28" stroke.

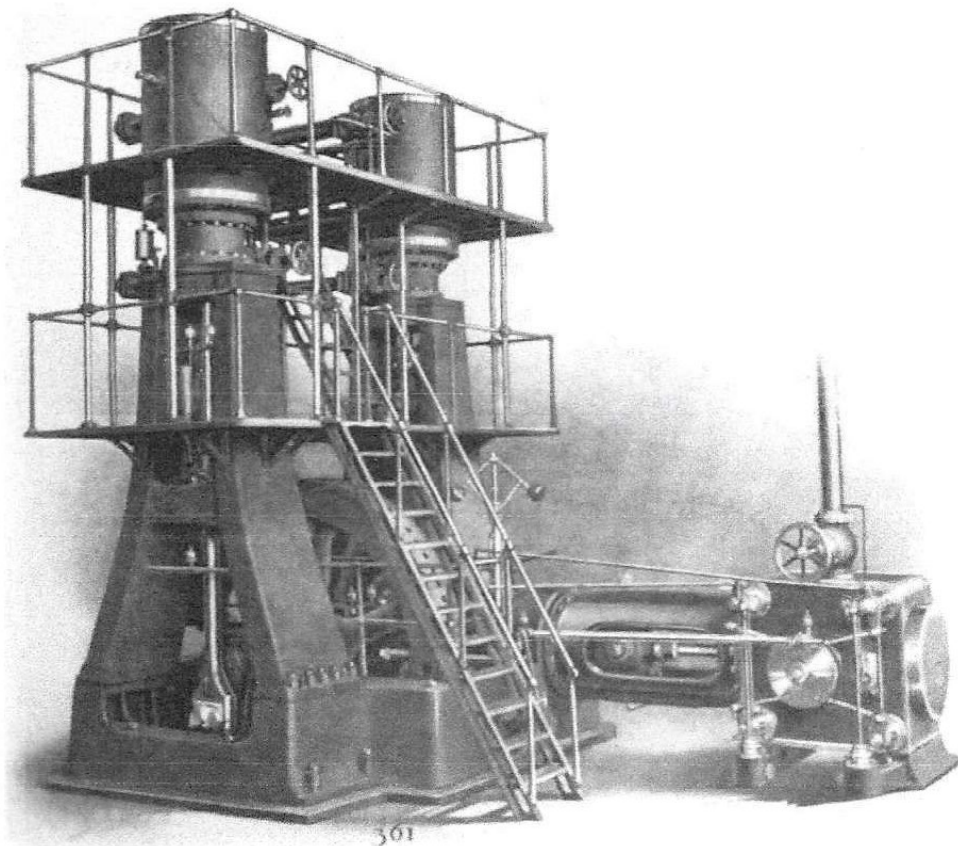
YORK MANUFACTURING CO.

YORK, PENNSYLVANIA, U. S. A.

Bulletin No. 21

October, 1907

**Vertical Single-Acting Ice Making
and
Refrigerating Machine**

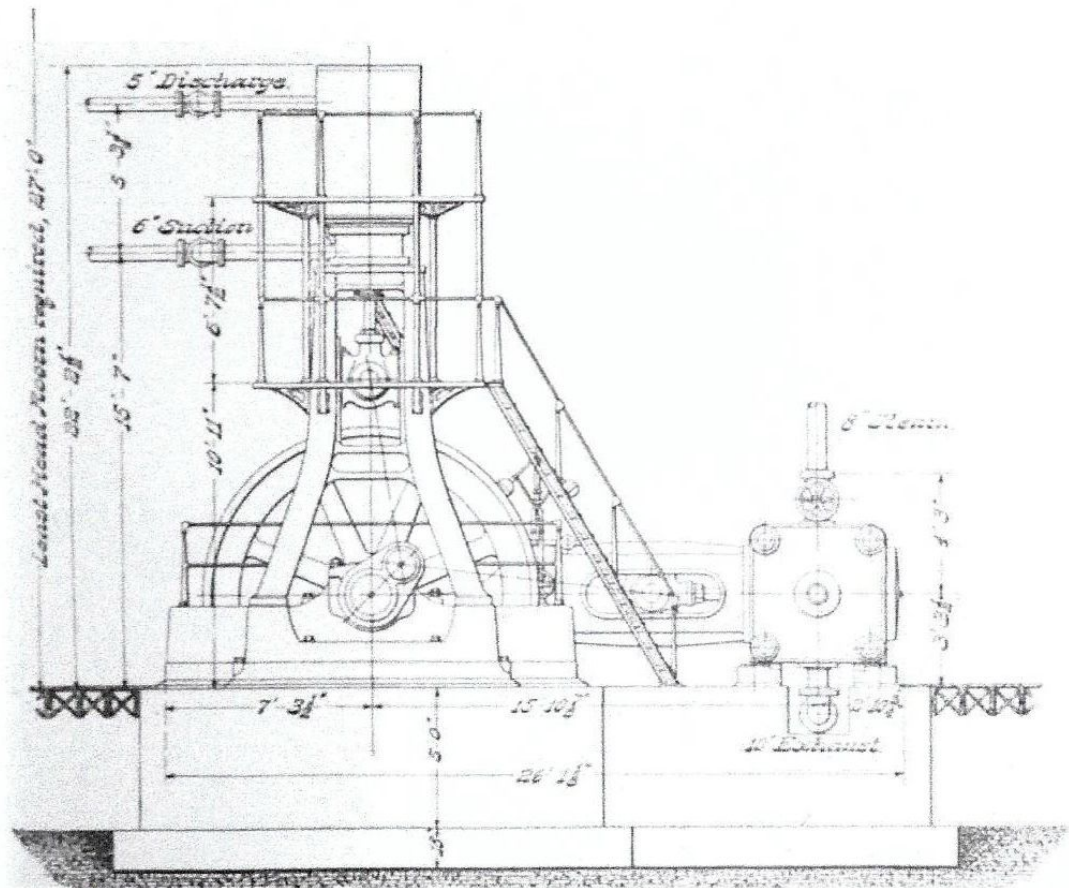
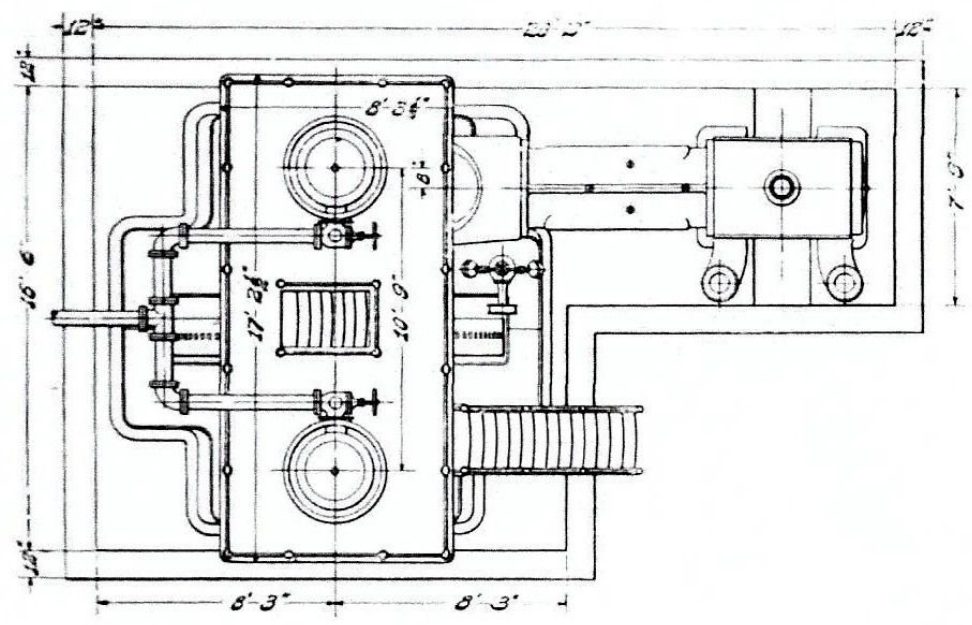


250-ton Refrigerating Machine.

Compressors—24" bore, 36" stroke.

Steam Cylinder—34" bore, 36" stroke.

Plan and elevation of two hundred and fifty ton machine with simple engine.



Plans of two hundred and fifty ton machine with compound engine.

